
2022 BEDC Q2 - BUSINESS REVIEW

Monroe County, Indiana

Bloomington, Ellettsville
& Surrounding Communities

Letter from the President

Dear Members, Partners & Neighbors,

Our driving mission is to advance economic prosperity for neighbors across Bloomington, Ellettsville, and all of Monroe County. The Bloomington Economic Development Corporation (BEDC) team is pleased to announce **Quarter 2** progress on our 2022 priorities. This report includes the results of your continued investment in the BEDC, while highlighting ways we can continue to work together.



Jennifer Pearl
President

Our 2022 priorities continue to be:

- 1. The Economic Vitality Project**
- 2. Business retention, expansion, and attraction projects**
- 3. Advancing the Trades District Technology Center**
- 4. BEDC membership support and engagement**

Quarter 2 has been busy. Activities included the *State of the Bloomington Regional Economy*; the community kickoff of the *Economic Vitality Project*; site visits; 20 active business retention, expansion, and attraction projects; and more.

Thank you for your partnership. The commitment of BEDC officers, board, members, and community partners make a significant impact on our local economy and quality of life. We look forward to our continued work together!

We thank you for being our neighbor!

Table of Contents

BEDC Governance, Members & Team	6
BEDC Officers	
BEDC Executive Committee	
BEDC Team	
BEDC Membership	
BEDC Programs & Activities	10
BEDC Meetings & Events	
BEDC 2022 Priorities	11
Economic Vitality Project	
Overview	
Project Roles	
Business Retention, Expansion & Attraction	
Project Overview	
Catalent	
Developments to Watch	
Trades District Technology Center	
BEDC membership support and engagement	
State of the Bloomington Regional Economy Recap	
Telling Our Story	
Welcome New Members	
BEDC Resources	23
BEDC Q2 Published Articles	
Live, Work and Play	

BEDC Officers



Sarah Rogers

Chair
IU Credit Union



Dave Conner

Treasurer
Harrell-Fish, Inc (HFI)



Valerie Peña

Secretary
IU Government Relations
& Economic Engagement



Cindy Kinnarney

1st Vice Chair
German American



Tyce Carmichael

2nd Vice Chair
Weddle Bros.
Construction Companies



Mark Figg

Past Chair
Figg Property Group LLC

BEDC Executive Committee

The BEDC Executive Committee is composed of our officers and ex-officios from local government.

- Monroe County Commissioner Penny Githens
- Monroe County Councilmember Geoff McKim
- City of Bloomington Mayor John Hamilton
- City of Bloomington Councilmember Sue Sgambelluri
- Town of Ellettsville Manager Michael Farmer
- Town of Ellettsville Councilmember William Ellis

BEDC Staff



Jennifer Pearl
President



Clark Greiner
Business Development
Director



Stacie Marotta
Communications &
Membership Director



Christina Elem
Operations Coordinator

**Contact
the
BEDC
team**



BEDC Indiana University Interns

Eli Bezotte

Indiana Leadership Program
O'Neill School of Public and Environmental Affairs

Jessica Brewer

Kelley Institute for Social Impact
Kelley School of Business

Sahana Golla

Kelley Institute for Social Impact
Kelley School of Business

Board Members

Axis Architecture + Design
Bloomington Board of Realtors
Bunger & Robertson
CarminParker, PC
Cassady Electrical Contractors
Catalent
CenterPoint Energy
CENTURY 21 Scheetz
CFC Properties
City of Bloomington
Comcast
Comprehensive Financial Consultants
Cook Medical
Duke Energy
E&B Paving/Irving Materials, Inc
EarthKeepers Compost
Electric Plus
FC Group, LLC
Figg Property Group, LLC
First Financial Bank
Folia
FORVIS
Garden Villa
German American Bank
Greater Bloomington Chamber of Commerce
Harrell-Fish, Inc (HFI)
Hoosier Energy
Hoosier Hills Credit Union
Hylant

Indiana University
IU Credit Union
IU Health Bloomington
Ivy Tech Community College - Bloomington
Ivy Tech Community College
Gayle & Bill Cook Center for Entrepreneurship
Monroe County Commissioners
Monroe County Council
Old National Bank
Oliver Winery
Owen County State Bank
RE/MAX Realty Professionals
Rogers Group, Inc
Rogers Group Investments, Inc
Smithville Communications
South Central Indiana REMC
Storage Express
The Herald-Times
The Peoples State Bank
Tim Ellis Realtors & Auctioneers
Town of Ellettsville
Trinitas Ventures
TRISTAR
VET Environmental Engineering
Visit Bloomington
Weddle Bros. Construction Companies



General Members

Acacia Investments LLC & TEXIN LLC
Bailey & Weiler Design + Build
Baird
Baxter
Bell Trace/Cardon
Bill C. Brown Associates
Bloomington Health Foundation
Bloomington Meadows Hospital
Bloomington Regional Rehabilitation Hospital
Blue & Co., LLC
Bynum Fanyo & Associates, Inc
Cancer Support Community
Commercial Service
Downtown Bloomington, Inc
F.A. Wilhelm Construction
F.C. Tucker/Bloomington Realtors
Force Construction Company, Inc
Great West Casualty Company



Hurlow Wealth Mangement Group, Inc
ISU Insurance Services The May Agency
John Bethell Title Company
J.S. Held
Milestone Contractors
Monroe County Airport
NSWC Crane
OEI, Inc
Patriot Engineering and Environmental, Inc
Phoenix Closures
Polycor
Public Investment Corporation
Schmidt Associates
Singota Solutions
Smith Design Group
Sponsel CPA Group, LLC
Tabor/Bruce Architecture & Design Inc
TASUS
The Mill
WS Property Group

Special Members

Indiana Small Business Development Center
Monroe County Community School Corporation
Richland-Bean Blossom Community School Corporation
Regional Opportunity Initiatives
Community Foundation of Bloomington & Monroe County
United Way of Monroe County/AFL-CIO Community Services
WorkOne South Central



BEDC Programs & Activities

Quarter 2

BLOOMINGTON ECONOMIC
BEDC
DEVELOPMENT CORPORATION

BEDC board meetings and all-member meetings featured the following topics in 2022:



January: Strengthening Economic Ecosystems

Cullen McCarty (Smithville), Steve Dawson (HFI), and Dan Peterson (Cook Group Inc.)

February: 2022 BEDC Annual Meeting - Developing a Vision for What's Possible

Lonnie Bedwell, Military Veteran, Single Father, Award Winning Author and Motivational Speaker

March: Funding Tools to Address Economic Development Challenges

Matt Eckerle, Baker Tilly Municipal Advisors

April: MCCSC Referendum Update

Dr. Jeff Hauswald, Superintendent - Monroe County Community School Corporation

May: Rethinking the Arts - A panel discussion on arts & economic development

Holly Warren, City of Bloomington & Gabe Gloden, Constellation Stage + Screen

June: State of the Bloomington Regional Economy

SBRE Report - Economic Update

By: Phil Powell IU Kelley School of Business Indianapolis - Associate Dean of Academic Programs and Clinical Associate Professor of Business Economics

Indiana University: Campus, Community, and Region

By: Rahul Shrivastav - Indiana University Executive Vice President & Provost and Bill Stephan, Indiana University Vice President for Government Relations and Economic Engagement

BEDC 2022 board meetings and all-member meeting schedule

Wednesday, August 17th, 2022 - Board Meeting

****Wednesday, September 21st, 2022 - September Special Meeting**

Wednesday, October 19th, 2022 - Board Meeting

Wednesday, November 16th, 2022 - Board Meeting

****Wednesday, December 21st, 2022 - December Special Meeting**

All board meetings start at 8am unless otherwise indicated.
Location changes monthly.

**** General and Board Member Meetings**

Special Meetings, State of Bloomington Regional Economy & Annual Meeting
- start times vary.

**Save
These
Dates**

Priority 1: the Economic Vitality Project (EVP)



NEW



www.EconomicVitalityProject.com

Updates to this project posted monthly

About the Economic Vitality Project

- *The Economic Vitality Project (EVP)* aims to improve life for our neighbors across Bloomington, Ellettsville, and all areas of Monroe County
- **Focus areas** include workforce, jobs, housing, infrastructure, and quality of life.
- **EVP participation is open** to anyone who lives or works across Monroe County.

How it works

The EVP convenes people across Monroe County to:

1. Prioritize challenges and opportunities we can tackle together as a community
2. Better support (not duplicate) existing efforts to address these issues and
3. Take new actions to fill in the gaps.

40

Existing Plans
Reviewed
*from across
Monroe County*

Funds raised
\$123,500

of \$162,000 goal
as of Q2

*Thank
You*

for your support!

2022 BEDC Priorities

Quarter 2

Priority 1: the Economic Vitality Project (EVP)

We invite BEDC Members to share this project with their co-workers, employees & neighbors. It's not too late to get involved.

Get Involved:
Take the Survey



EVP Project Role Descriptions

Project Team	Bloomington Economic Development Corporation, with support from Fourth Economy Consulting
Steering Committee (SC)	Project leaders who promote inclusive outreach, engagement, EVP implementation, and strategy refinement
Advisory Group (AG)	Project leaders who help connect the EVP with a broader audience
Working Groups (WG)	Community partners convening to identify problems and build solutions; facilitated by Fourth Economy

EVP Process Flow

Project runs June 2022 through winter 2022/2023

Working Groups Session #1	Brainstorming and discovery around existing programs, resources, challenges, and gaps
Interviews	One-on-one and group discussions with community partners to better understand lived experience and our shared challenges / opportunities across the region.
SC Meeting and AG Outreach	Refine EVP focus areas based on outputs from Working Group Session #1 and Interviews; continue engagement outreach in preparation for additional working group sessions
Working Groups Session #2 - #6	Guided workshops to develop implementable solutions, including assessment of timing, impact, lead and partner organizations, resources needed; individuals sessions organized by EVP focus area
Community Survey	County-wide community survey to better understand interests and needs of residents, as it relates to the EVP
SC Meeting and AG Outreach	Refine EVP strategies and action plan based on outputs from Working Group Sessions #2 - #6 and Community Survey; continue engagement outreach as necessary to prepare for implementation in 2023

www.EconomicVitalityProject.com

Priority 2: Business Retention, Expansion & Attraction

Despite broader economic conditions business retention, expansion and attraction efforts were brisk for the 2nd Quarter of 2022. The BEDC actively supported approximately 20 organizations seeking expansion and relocation services. Technology and Advanced Manufacturing led the way with 10 and 6 projects respectively. Food Processing, Life Sciences and Distribution account for most of the remaining opportunities.



Quarter 2 Projects

Active projects supported by the BEDC = 18
Projects reviewed in 2022 = 52

Definition of Active Projects:

An active project is a traded sector business that a BEDC representative is engaged in advising or in discussion about their business needs in pursuit of expansion, retention and attraction in the community.

BEDC services include advising on available incentives, workforce development and talent attraction, housing and other matters related to quality of life in Monroe County, Indiana.

Traded Sectors Served

- Technology - 10
- Advanced Manufacturing - 6
- Food Manufacturing - 2
- Life Science - 1
- Distribution - 2
- Miscellaneous - 3

Priority 2: Business Retention, Expansion & Attraction

CATALENT INVESTS IN EXPANSION



Global Headquarters:
Somerset, New Jersey

Global Revenue:
\$4 billion in 2021

The Bloomington
manufacturing center is
Catalent's largest production
facility producing over

700 Million

COVID-19 Vaccines.

The Indiana Economic
Development Corporation
(IEDC) and City of Bloomington
provided tax abatements and
incentives for Catalent's
significant investment into new
state-of-the-art technology and
equipment.

The BEDC team is proud to
have worked closely with
Catalent on this project.

\$350M

Investment
in local
community

+3,200

Employees
in Bloomington

+1,000

NEW
High-Wage
Jobs

If you have an expansion happening, contact the
BEDC Business Development Director Clark Greiner for no-cost guidance.

Priority 2: Business Retention, Expansion & Attraction

Developments to Watch

Contact the City of Bloomington for more information, or visit the website below.



Hopewell Development: Former Bloomington Hospital Site

The City of Bloomington is pleased to announce that “Hopewell” will be the name for the new neighborhood to be created following the decommissioning and demolition of the former IU Health Bloomington campus on West 2nd Street. The Hopewell name has a long history of association with the site.

Gross Redevelopment Area: ± 26
Net Redevelopment Area: 14.3
(in acres)



www.bloomingtonhospitalsite.com



Priority 2: Business Retention, Expansion & Attraction

Developments to Watch

For more information, visit the Trades District webpage.

scan here



Trades District Webpage

Trades District & Certified Technology Park

The Trades District is the technology and commercial center of the larger Bloomington Certified Technology Park (CTP). The CTP is located immediately northwest of the courthouse square and downtown core.

It is home to the Showers Municipal Complex, numerous mixed use developments, and many tech businesses.

Certified Technology Park: 65 acres
Trades District Study Area: 12 acres
Trades District CCR Area: 7.5 acres

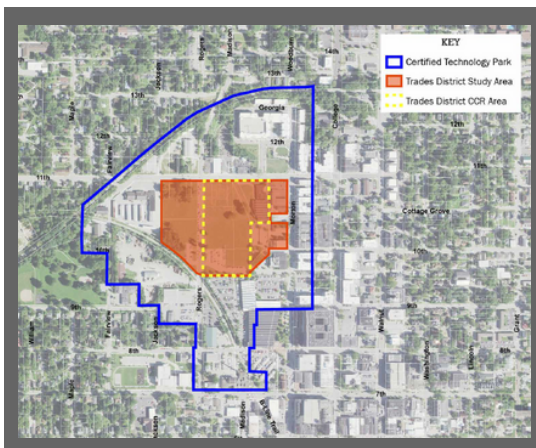
Office



Housing



Retail



Priority 2: Business Retention, Expansion & Attraction

Developments to Watch

Water
Sewer

Electric
Gas

PINNACLE BUSINESS PARK

Property available for development.

300 N. Curry Pike
Bloomington, IN 47403



69
acres

Zoned:
Light/Heavy Industrial

This is a brownfield site with an environmental history. There are **12 lots available** for purchase. **Only 2 lots remain** all others are under contract for future development.

Dave Harstad
Dave.Harstad@colliers.com
Phone: 812.339.1301

Business Retention, Expansion & Attraction

Quarter 2

BLOOMINGTON ECONOMIC
BEDC
DEVELOPMENT CORPORATION

Priority 2: Business Retention, Expansion & Attraction

Developments to Watch

For more information, visit the airport webpage.

scan here



Airport webpage

Monroe County Regional Airport

Property available for development.

1972 South Kirby
Bloomington, IN 47403

Preferred Uses: Aeronautical and Non-Aeronautical



Aeronautical uses would be placed on the western portion of the lot to provide access to the runway. The non-aeronautical uses would likely include light industrial, tech park or other strategic uses related to the airport and access to the runways. Non-aeronautical needs are available in other areas of the property.



Electric
Gas

Water
Sewer

Broad-
band

Priority 3: Trades District Technology Center

The Trades District Technology Center will provide services and office space for growing and mature tech companies that are beyond the early-startup phase. Once completed, the Center will serve as a hub for accelerating the region's emerging technology sector, while filling a gap in the continuum of tech start-up resources.



\$3.5 M

BEDC & City of
Bloomington applied for
and received a \$3.5
million grant to support
this project from the US
Economic Development
Administration

Currently updating the Centers business plan and working to address construction funding gaps due to inflation of construction costs.

Current Timeline:

August - September 2022:	anticipated start of building design development
January 2023 - June 2024:	program development, fundraising, recruitment of tenants, building of Center team
April 1, 2023 - June 30, 2024:	building construction period

Priority 4: BEDC membership support and engagement

Our membership is the backbone of the BEDC. You make it possible for us to make a positive impact to Bloomington, Ellettsville and all of Monroe County.

Q2 STATISTICS

- 1 New Member
- 45 Member Meetings
- 13 Prospect Meetings
- 67 Member Referrals

BEDC State of the Bloomington Regional Economy - June 23, 2022

Economic Update &
Indiana University + Community: An Economic Partnership

The State of the Regional Economy brought together community leaders across the county and state to discuss important challenges facing our community and where do we stand in addressing these issues. Thank you to Indiana University for providing the Economic Update and engaging the business community in thought-provoking ways to partner with the university in the future.



Rahul Shrivastav

Indiana University
Executive Vice President and IU Bloomington Provost



Bill Stephan

Indiana University
Vice President
Government Relations and Economic
Engagement



Phil Powell

IU Kelley School of Business
Associate Dean of Academic Programs - Indianapolis
Clinical Associate Professor of Business Economics

State of the Bloomington Regional Economy

220
in Attendance

42

Table Sponsors

Priority 4: BEDC membership support and engagement

Telling Our Story

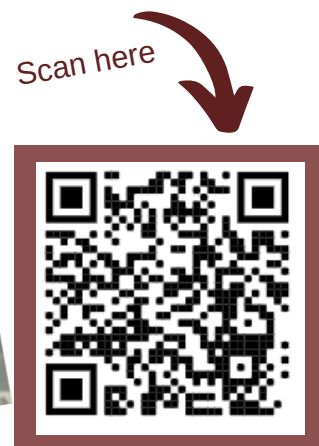
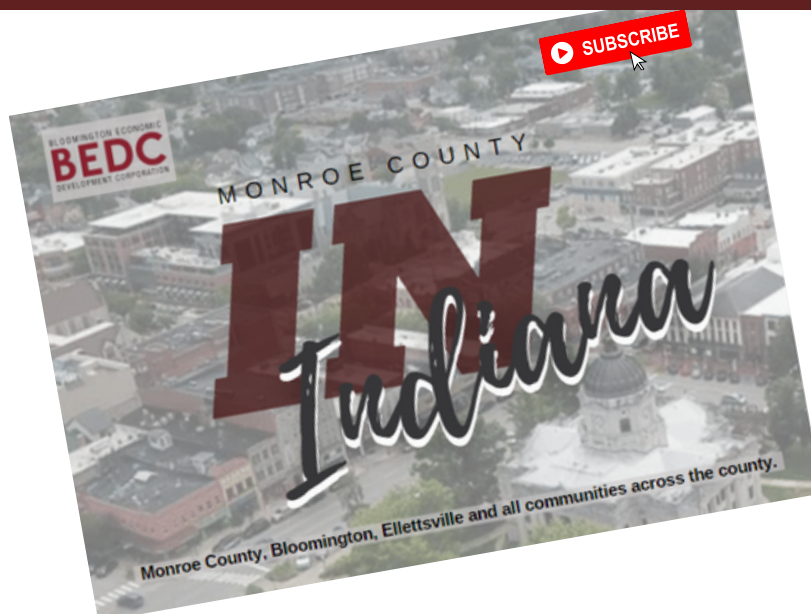
The BEDC released 3 new videos at the State of the Bloomington Regional Economy Meeting in June in the "Why Monroe County" video series. The intent for these videos are to be used in Talent Attraction, Business Attractions and a way to tell the story of our great community.

- Smithville - a long history in Monroe County
- Fostering a Life Science Legacy
- Life is great in Monroe County

A total of **5 videos** have been uploaded to the *BEDC YouTube page* for our members and our educational partners to use as a resource for business. Two more videos are in production to be released at the BEDC September Special (all member) meeting.

Remember to subscribe, like and share!

Subscribe to the BEDC YouTube Channel



Priority 4: BEDC membership support and engagement

2022 New BEDC Members



Know a company that would be a great fit for BEDC Membership?

Share your recommendations with our Membership Director, Stacie Marotta.

BLOOMINGTON ECONOMIC
BEDC
DEVELOPMENT CORPORATION

Q2

ARTICLES & RESOURCES

As featured in the Herald Times. May 6, 2022

Fostering a Life Sciences Legacy

Jennifer Pearl
BEDC President



Catalent Pharma Solutions recently announced a \$350M investment in its Bloomington manufacturing facility that is expected to add 1,000+ new jobs to Catalent's Bloomington workforce in coming years. The BEDC is proud to work alongside numerous partners who support this project.

This is a huge win for quality jobs and vitality in a key industry, as Bloomington is a nationally recognized leading metro in life sciences, medical devices, contract pharma, biotechnology, and more.

Life sciences industry in Bloomington, Monroe County, and Indiana have a long history of success. Statewide, this industry has a \$77 billion economic impact that was reported in 2021 (source: Biocrossroads).

Today, the Bloomington-area community has over 12,000 people who are employed by 46 life sciences companies, including Cook, Catalent, Boston Scientific, Baxter and Singota Solutions.

Our life sciences origins and growth

Bloomington's life science leadership started in the spare bedroom of a small apartment in 1963. Catheters, needles, and wire guides were the first products Bill Cook created. Today, Cook invents, manufactures and delivers a unique portfolio of medical devices to the healthcare systems of the world and touches almost every area in a hospital.

Public-private partnership helped Bloomington recover from a significant hit to its employment base, while growing its life sciences. Catalent is located on the former site of Thomson Consumer Electronics, which closed in 1997 and laid off 1,200 employees. A neighborhood strategic plan and deployment of City economic development tools helped to redevelop the site to encourage new investment.

In 2004, Cook Pharmica agreed to open its facility on the old Thomson site with a goal of creating 200 jobs, expanding again in 2008 and 2015. Catalent purchased Cook Pharmica in 2017 and has built on a strong foundation as they continue to grow.

...continued

Fostering a Life Sciences Legacy

...continued

Educational investment

Local investment in life sciences extends to higher education. Ivy Tech Community College works with life science industry partners to support a regional talent pipeline. This includes academic pathways, one and two year credentials, customized training, and a Biomanufacturing Tech Apprenticeship training program with Hoosier Hills Career Center. The college is also working with Regional Opportunity Initiatives to create additional pathways to connect area students to regional careers and training in the Indiana Uplands region through the UpSkill Work & Learn opportunity.

Indiana University's investments in life sciences include but are not limited to the Kelley School of Business Center for the Business of Life Sciences. The center convenes students for gaining skills and knowledge throughout the life science industry, such as finance & supply chain. IU works with industry to attract and connect talent, while supporting research on issues they face. IU also offers over a dozen degrees supporting the life sciences through its College of Arts & Sciences (i.e. chemistry, biotech, psychology), School of Public Health (ie. epidemiology, nutrition science) and O'Neill School of Public and Environmental Affairs (healthcare management). The new IU School of Medicine's campus in Bloomington fosters medical research and educates undergraduate students in healthcare to medical students seeking their MD.

Looking to the future

Our life sciences community continues to make history, from creating minimally invasive catheter procedures to providing the world with COVID-19 vaccines. Because of our collaboration and investment into Life Sciences, Bloomington will continue to make a significant impact in our global society. As this industry continues to grow, we proudly support our life sciences visionaries and the many companies that call our community home.



Thank you to the partners who assisted with the Catalent expansion. Catalent, Bloomington Life Sciences Partnership, the City of Bloomington, City Council, the Bloomington Economic Development Commission, Monroe County, the Indiana Economic Development Corporation, and other local economic development partners.

7 Ways to Retain Employees

Stacie Marotta

BEDC Communications & Membership Director



It's no secret that our nation is short-staffed. In fact, most human resources departments are also facing the same dilemma of performing more duties with fewer people. When spread thin, it's difficult to find the time and resources to show appreciation, but it's also important to remember that appreciation and retention programs are more cost effective than turn-over. Retention programs encourage employees to focus on attendance, productivity, and safety. Here are a few ideas that can help you create or sustain a retention program in your workplace.

(1) **Appreciate employees.** Most people like to be remembered and thanked personally. Celebrating birthdays or work anniversaries are simple cost-effective ways to show employees that you care.

(2) **Make work fun.** Ask employees to dress in costume, company colors or apparel to celebrate the various seasons and team spirit. This no-cost option is great to create comradery, inclusion and fun. Engage employees in friendly competitions. Prizes don't need to be expensive, just fun.

(3) **Reward your employees** for perfect attendance, and workplace safety initiatives. Easy low cost rewards could include longer lunch periods, or casual work days.

(4) **Create a service day** for your team to give back to the community. In addition to serving the community, it's great public relations for your company. Volunteer at a local food bank, adopt parts of your city, and perform graffiti clean up. For more volunteer ideas, visit bloomingtonvolunteernetwork.org.

...continued

7 Ways to Retain Employees ...continued

(5) **Foster connections outside of work.** Host a BBQ and invite family members of your staff. Family buy-in creates a stronger relationship with your employee's family and ways to find new and future employees. When you come together outside of the office, personal bonds are formed, which creates company loyalty.

(6) **Sponsor a local festival** and get a private location at the event for employees, family and vendors. You're able to accomplish employee retention, recruitment and public relations all in one event. Additionally, you can ask for budget assistance from marketing.

(7) **Most importantly, understand and support your team.** Retention programs are fun ways to engage your employees, but are only effective when you understand your team. Burnout plays a large role in turnover. Remember to manage expectations, ensure employees have the tools they need to do their jobs, and do regular mental health check ins. This along with a solid retention program will put you ahead of the talent retention game.

Looking to promote this community as a great place to work? The BEDC can help. Visit <http://www.bloomingtonedc.com/businessresources/workforce> for more talent acquisition tools.



Jennifer Pearl
BEDC President



Stacie Marotta
BEDC Communications
& Membership Director

(Re)Discover Life in Monroe County this Summer

Whether you're new or rediscovering life in Monroe County this summer, our community offers a lot for work, life, and play. As the BEDC team supports new and growing employers, we love to share our favorite aspects of life in Bloomington, Ellettsville, and the Monroe County community.

Here are some options for everyone to explore: **Make an impact.**

The Bloomington area offers careers in fields ranging from education, to technology, life sciences, startups, nonprofits, government, human services, advanced manufacturing, defense, and more. This work makes an impact locally, and globally through goods and services that are created here and are traded throughout the world... and many jobs are available right now.

Feed your mind. Indiana University and Ivy Tech Community College-Bloomington are based in Monroe County, serving almost 60,000 students. Families with children have educational options including the Monroe County Community School Corporation, Richland-Bean Blossom Community School Corporation, and private and charter schools.

Feed yourself. You don't have to leave to travel the culinary world. Experience new flavors at one of our 350+ restaurants or outstanding local breweries, wineries and distilleries.

Enjoy arts & culture. Music and shows abound at the Bluebird, Buskirk-Chumley Theater, Comedy Attic, IU Auditorium, and the IU Musical Arts Center featuring the second-largest stage area in the country after New York City's Metropolitan Opera. Over 1100 performances are offered annually by the IU Jacobs School of Music alone. Yearly festivals bring the arts to you, ranging from the Lotus World Music & Arts Festival, to the 4th Street Festival of Arts & Crafts, and Bloomington Music Festival. Explore the collections at the IU Eskenazi Museum of Art and Lilly Library's internationally-known collection of cultural & literary artifacts. Expand your horizons at the Tibetan Mongolian Buddhist Cultural Center.

...continued

As featured in the Herald Times. May 15, 2022

(Re)Discover Life in Monroe County this Summer

...continued

Get outside: Summer is a great time to hike or bike the 200+ miles of local trails nearby in the Hoosier National Forest. Cool off on Lake Monroe, Griffy Lake, or Lake Lemon. If you prefer to move en masse, the community offers annual events like the Hilly Hundred Bicycle Tour, Hoosiers Outrun Cancer, or Hoosier Half Marathon & 5K. Or for a sky-high experience, attend the annual Kiwanis Indiana Balloon Festival.

Cheer on the IU Hoosiers year round, through the over 20 teams to watch. Monroe County has everything for the avid sports fan and outdoor enthusiast and it's only a few hours drive from popular destinations like Chicago, Ohio, Kentucky and Nashville, Tennessee.

Not a road warrior? No problem! Monroe County has its own airport. Just an hour away gets you access to the award-winning Indianapolis International Airport.

Get into the community: Hoosier hospitality is about community and giving back. Summer is a great time to do it. Refer to the Bloomington Volunteer Network for organizations and projects that need your help today.

Looking for more ideas? Our friends at Visit Bloomington have great resources on things to do and where to go. The BEDC is also producing a video series that highlights why our community likes to live, work and play here. We love Monroe County and hope you do too. We want you to be our neighbor!



Bloomington Volunteer
Network



Visit Bloomington
for fun things to do
around town



Watch newly released videos
on why people choose to live
and play in Monroe County, IN

Live, Work, Play

Monroe County – Bloomington - Ellettsville

BLOOMINGTON ECONOMIC

BEDC

DEVELOPMENT CORPORATION



350 +

Local Restaurants
bars & coffee shops

plus 7 local breweries,
2 wineries
& 1 local distillery



50 Best Foodie
Towns in America

-The Daily Meal 2019

"B-Town offers an incredible
spectrum of cuisines from around the
world."

-Forbes Magazine - Feb 2022



GOLD-LEVEL
bike friendly
COMMUNITY

PLAYFUL CITIES

USA



Family Friendly

Arts & Culture

Recreation

Local Festivals

Nightlife

Live Sporting Events

The Great Outdoors

and so much more!

BLOOMINGTON ECONOMIC DEVELOPMENT CORPORATION
www.BloomingtonEDC.com